

INSTRUCTION MANUAL

Preparing hardware

First complete the full installation of the Dimlux Maxi Controller and all the sensors and lights. -Connect the supplied Dimlux USB storage device to the USB port on the Maxi Controller -When using a field supplied USB storage device, make sure you format it using the file system FAT32 and unit size 512 bytes. Do NOT use Quick format.

Start logging

After the hardware setup is complete, press and hold the modus key on the Maxi Controller. The software will initialize the USB device and logging will start. -By pressing and holding the modus key again the logging will stop. -When the Maxi controller is logging, the green led next to 400watt will blink.

Software Windows

Be sure you have java 8 installed. Java can be downloaded at <https://java.com/nl/download/>

Remove old version of DimluxDatalogger (Add and remove programs)

Download 'DimluxDatalogger_0.5.msi'

Install the application by double click the downloaded file

You can find the program under 'Airsupplies' in the start menu

Software OsX

Be sure you have java 8 installed. Java can be downloaded at <https://java.com/nl/download/>

Remove old version of DimluxDatalogger (Click on program icon, and press delete)

Download 'DimluxDatalogger_0.5.dmg'

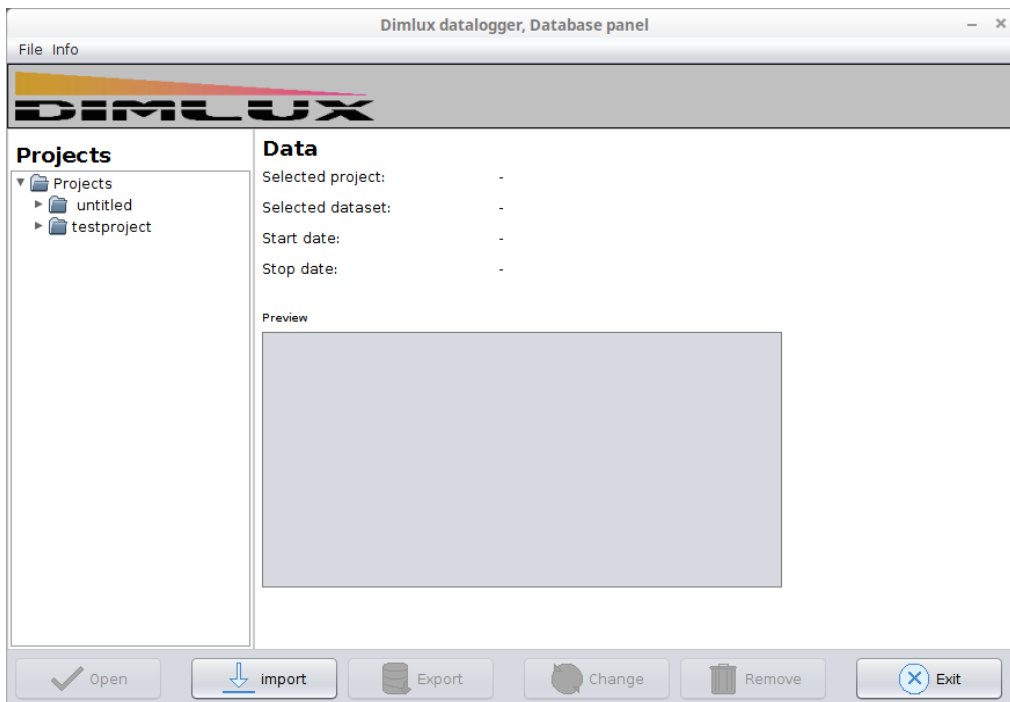
Install the application by double click the downloaded file

You can find the application in the Applications menu

View data

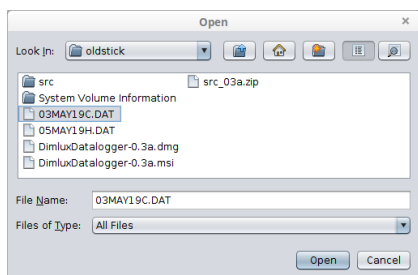
After installing the software on your pc or laptop, insert the USB storage device and open the datalog software.

Import the data file by pressing the 'Import' button on the database panel.

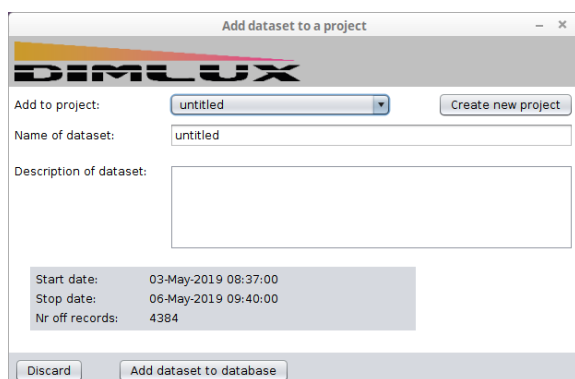


You will see a file chooser dialog to select the file you want to import from the USB storage device.

INSTRUCTION MANUAL



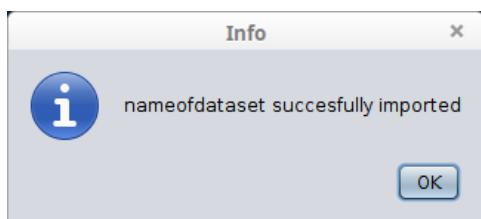
When the data is checked and accepted



You have to select in which project the data will be imported. You can create a new project when the wanted project isn't available.

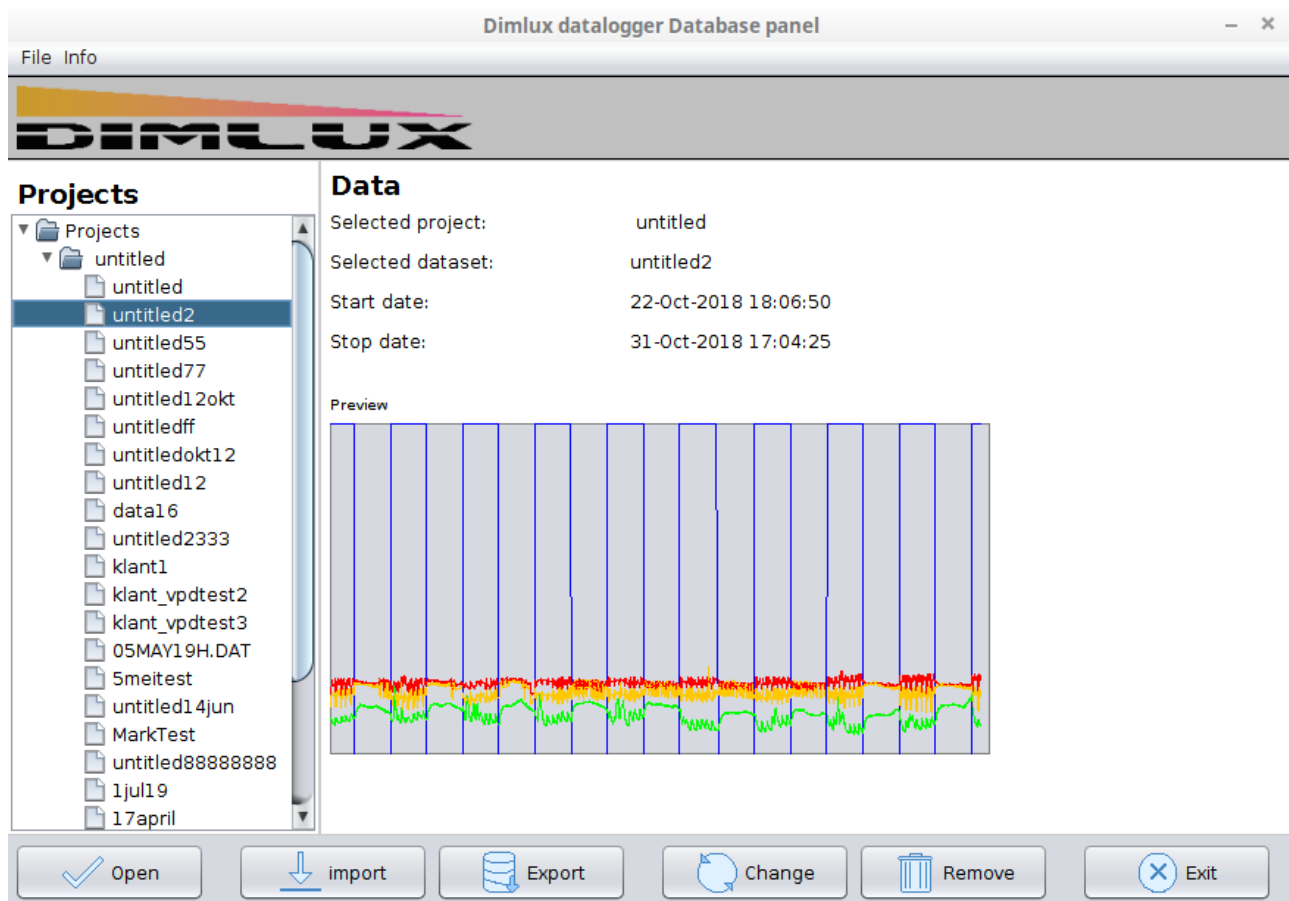
The data you will import will be called 'dataset', which you have to name.

Press 'Add dataset to database' to import it all.



INSTRUCTION MANUAL

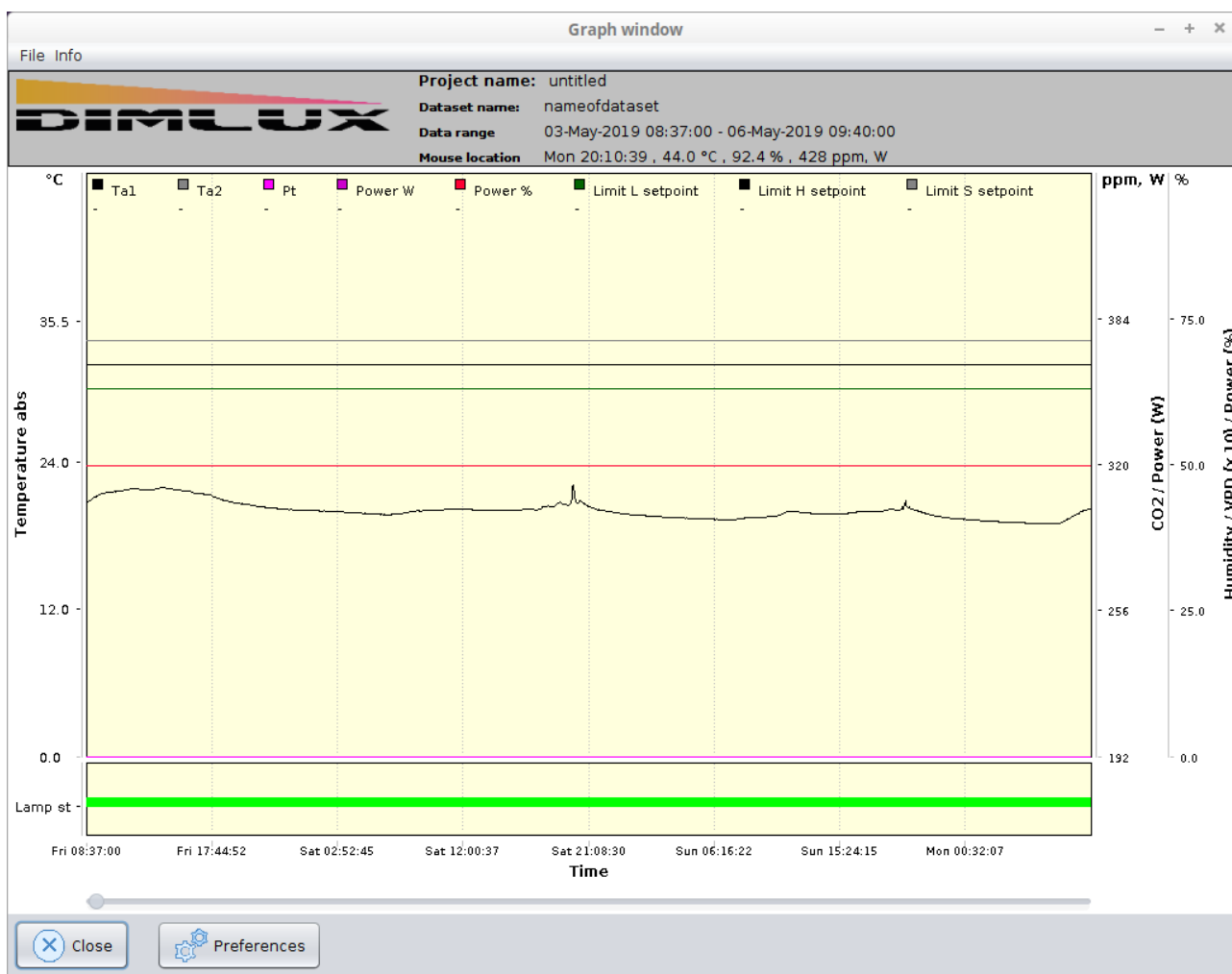
To view the data you have to select the wanted dataset in the database panel.



There will be a preview.

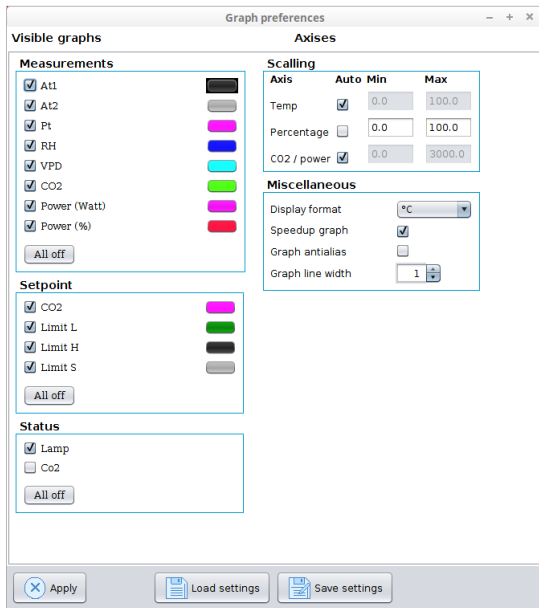
By pressing open, the data can be viewed.

INSTRUCTION MANUAL

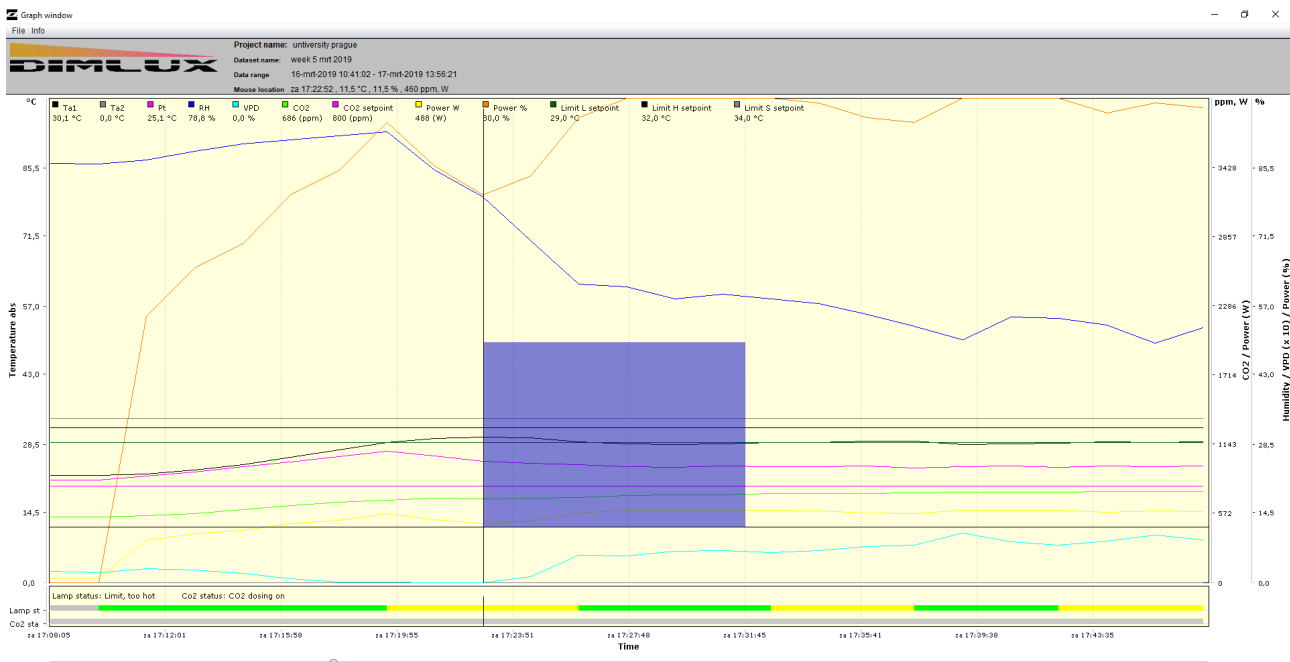


You can open the preferences by pressing the 'preferences' button.

INSTRUCTION MANUAL

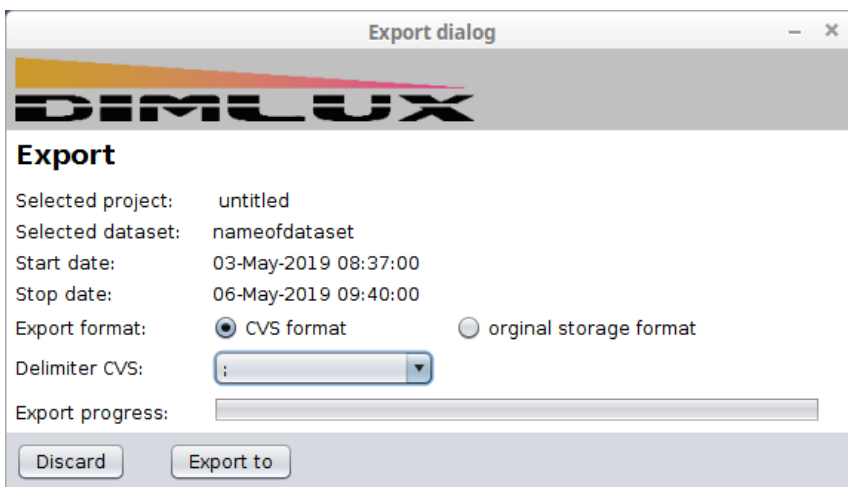


You can zoom in and out using your mouse hold left click and drag.



INSTRUCTION MANUAL

By pressing export in the database panel, you can export. There are 2 formats available. CVS, which can be used to import to excel. An original storage format is also available. It is the same format as the datalogger.



CVS export.

Below is a snippet of the exorted data.

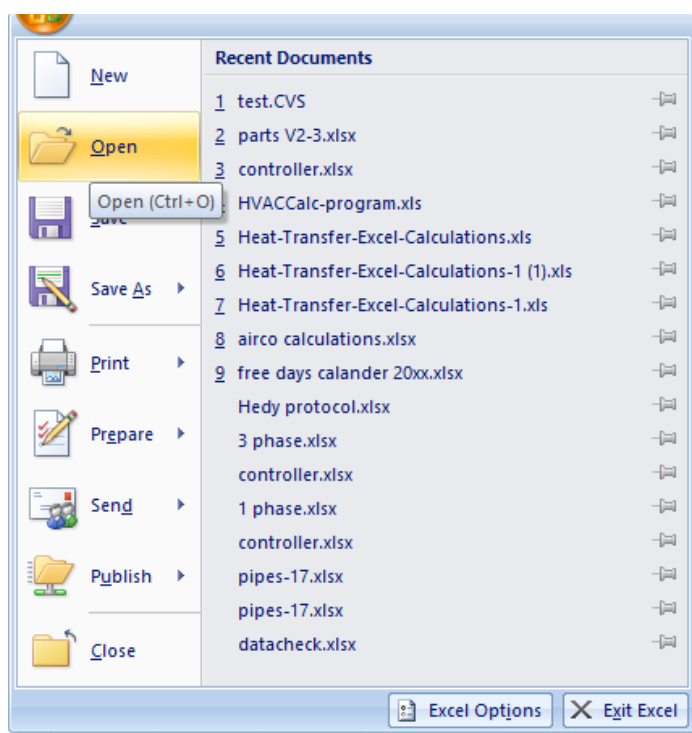
```
date;time;At1;At2;Pt;RH;VPD;CO2;PowerW;PowerP;Lamp status;CO2 status;Limit L;Limit H;Limit S;CO2 setpoint
03-05-19;08:37:00;20.7;0.0;0.0;0.0;0.000;0;320;50; ;!;30;34;32;400
03-05-19;08:38:00;20.8;0.0;0.0;0.0;0.000;0;320;50; ;!;30;34;32;400
03-05-19;08:39:00;20.8;0.0;0.0;0.0;0.000;0;320;50; ;!;30;34;32;400
```

As you can see the data fields are separated with a ';' which is selected at the Export dialog (Delimiter CVS). You can see which data is in which column by looking at the first line.

Start Excel

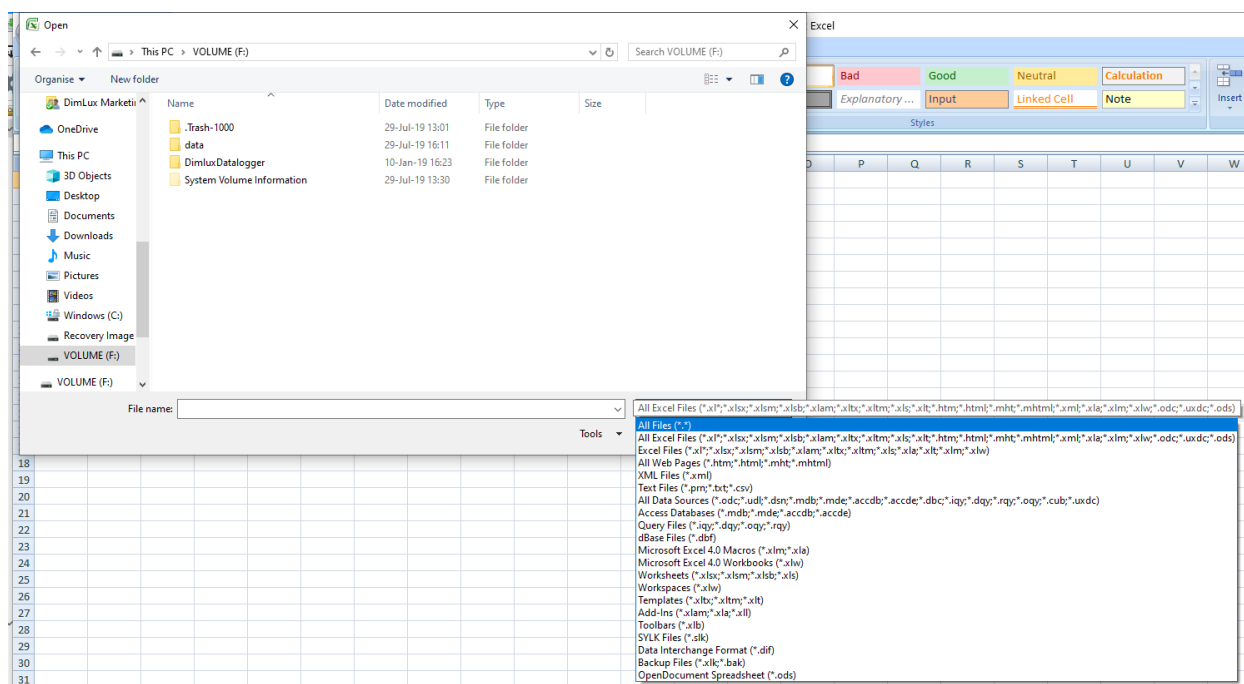
Load file: select 'all files *.*'"

INSTRUCTION MANUAL



Select the file to load (.....CSV)

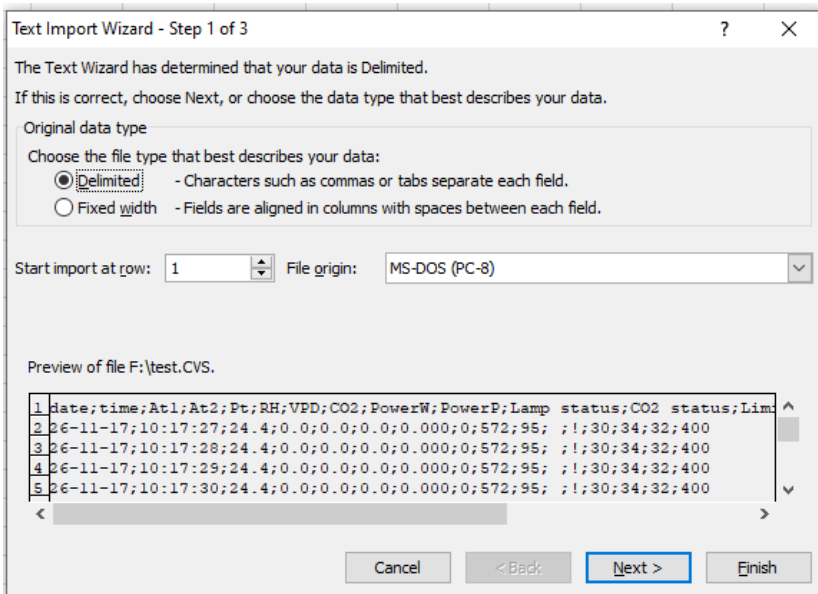
INSTRUCTION MANUAL



A text wizard will open

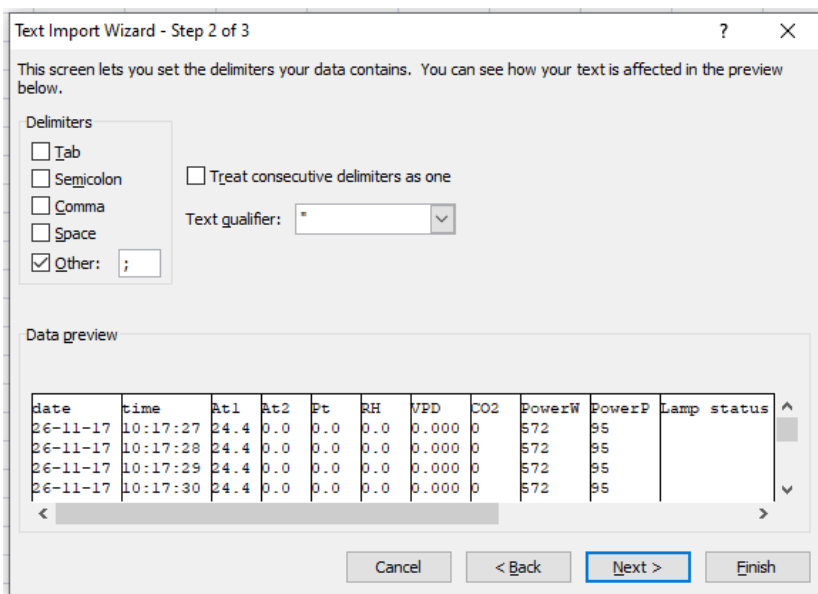
Select 'Delimited'

INSTRUCTION MANUAL



Push 'Next'

Deselect the selection boxes for delimiters and select 'other' and fill in ';', then click finish.



INSTRUCTION MANUAL

The result

	A	B	C	D	E	F	G	H	I	J	K	L	M	N	O	P	Q
1	date	time	At1	At2	Pt	RH	VPD	CO2	PowerW	PowerP	Lamp stat	CO2 statu:	Limit L	Limit H	Limit S	CO2 setpoint	
2	26-11-17	10:17:27	24.4	0	0	0	0	0	572	95		!	30	34	32	400	
3	26-11-17	10:17:28	24.4	0	0	0	0	0	572	95		!	30	34	32	400	
4	26-11-17	10:17:29	24.4	0	0	0	0	0	572	95		!	30	34	32	400	
5	26-11-17	10:17:30	24.4	0	0	0	0	0	572	95		!	30	34	32	400	
6	26-11-17	10:17:31	24.4	0	0	0	0	0	572	95		!	30	34	32	400	
7	26-11-17	10:17:32	24.4	0	0	0	0	0	572	95		!	30	34	32	400	
8	26-11-17	10:17:33	24.4	0	0	0	0	0	572	95		!	30	34	32	400	
9	26-11-17	10:17:34	24.4	0	0	0	0	0	572	95		!	30	34	32	400	
10	26-11-17	10:17:35	24.2	0	0	0	0	0	572	95		!	30	34	32	400	
11	26-11-17	10:17:36	24.2	0	0	0	0	0	572	95		!	30	34	32	400	
12	26-11-17	10:17:37	24.2	0	0	0	0	0	572	95		!	30	34	32	400	
13	26-11-17	10:17:38	24.2	0	0	0	0	0	572	95		!	30	34	32	400	